

D-Link

Quick Installation Guide



DSL-200

USB ADSL Modem

Before Your Begin

This Quick Installation Guide gives step-by-step instructions for setting up the D-Link DSL-200 ADSL Modem. The model you have purchased may appear slightly different from those shown in the illustrations. For more detailed information about the ADSL Modem, its components, making network connections and technical specifications, please refer to the User's Manual included with your ADSL Modem.

Check Your Package Contents

These are the items included with your DSL-200 purchase:



- **DSL-200 ADSL Modem (USB interface)**



- **CD ROM include Driver and User's Guide**



- **Quick Installation Guide**



- **USB Cable**



- **RJ-11 Cable**

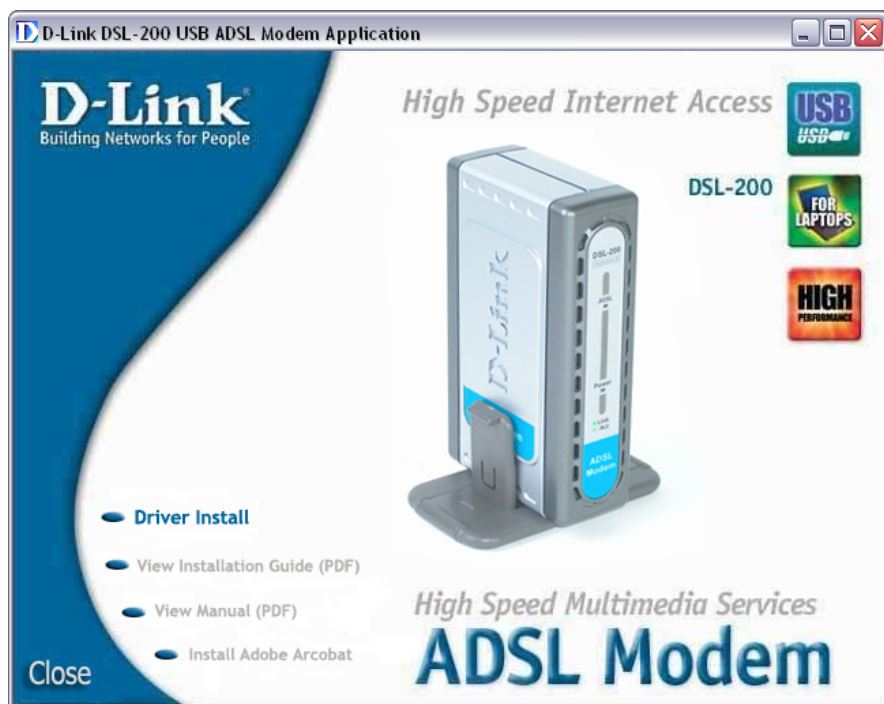
If any of the above items are missing, please contact your reseller.

1

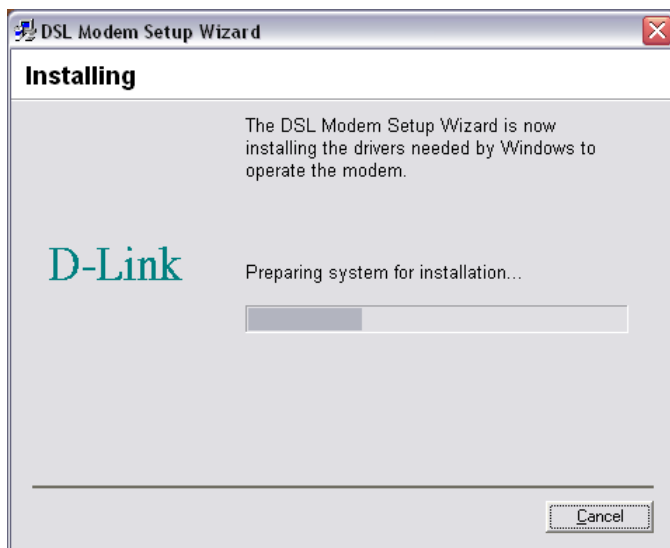
Install Modem Driver

Before starting the software setup process, close all windows and quit any application programs you are running. The installation procedure presented here is the same for Windows 98, 98SE, ME, 2000, XP* operating systems.

1. Insert the DSL-200 Installation CD into the CD-ROM drive. The user should automatically be presented with the following screen. To begin the installation process, click **Driver Install**.



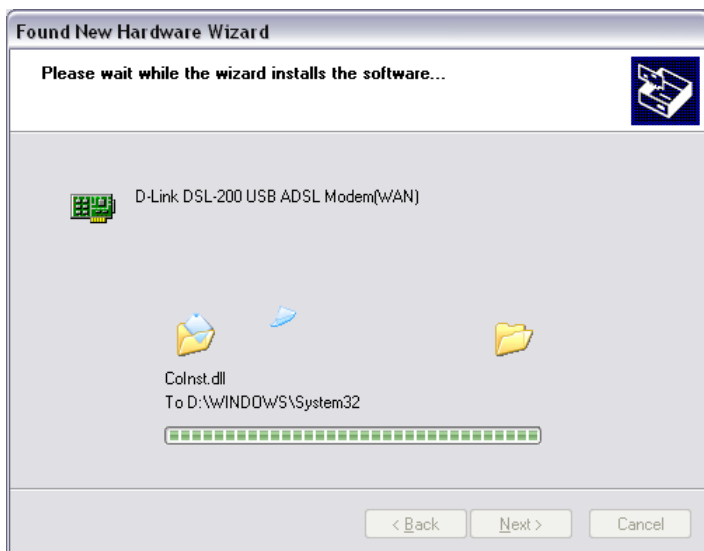
2. The computer will search for the appropriate installation file on the CD, and once found, will start the installation process. The user will see the following window, indicating the process is ongoing.



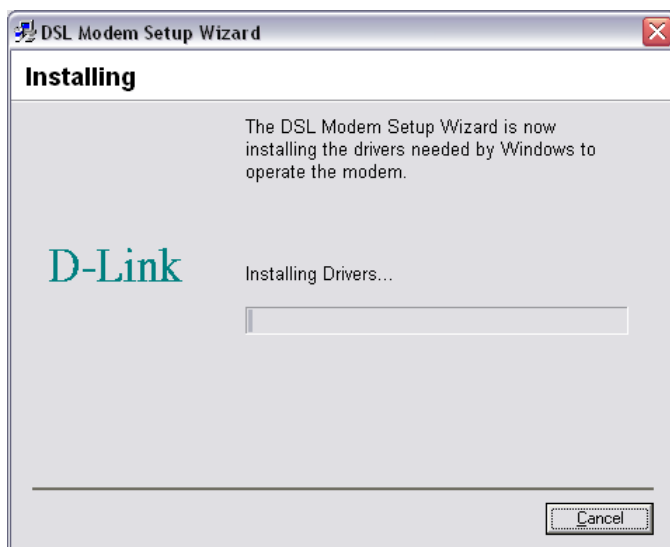
3. The process will lead to the following window, indicating that the user should now physically install the device. Power on the device, connect the USB cable, first to the device and then to an available USB port on your computer.



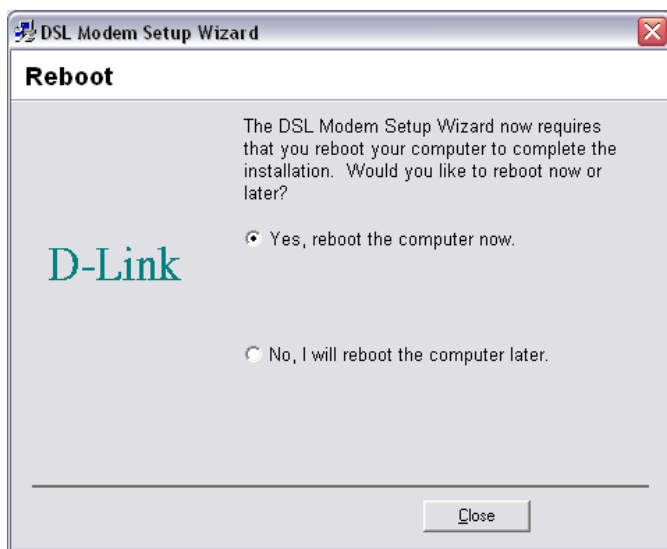
4. The computer will automatically recognize the modem and begin the hardware installation process. The user will be presented with the following two screens. The first one indicates that the computer has recognized the device and is installing files for the hardware installation.



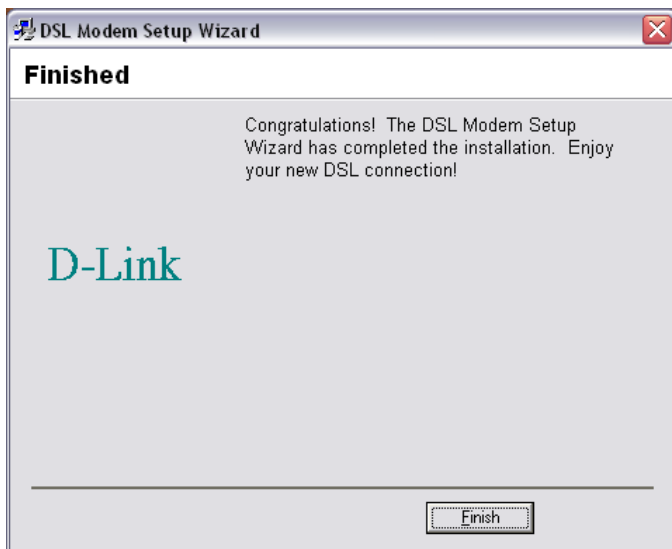
The second window is from the CD installation, indicating to the user that the driver files for the modem are being copied from the CD to the computer.



5. Once the files have been copied and this part of the installation is complete, the user will be presented with this window, prompting the user to reboot the computer. Close all open files, choose “**Yes, reboot the computer now**”, and click **Close**. The window will close and the computer will reboot



6. Once rebooted, the user will be presented with this window, indicating that the process is complete. Click **Finish** to complete the installation wizard.



7. Now that the driver software has been installed, you are ready to establish a connection to the Internet. Once completed, icons will appear on the PC desktop. Double click the **D-Link Internet Connection** Icon, as seen to the left. The window in the following step should appear to the user.



8. Before completing the following window, connect the ADSL line from your ISP to the ADSL port at the back of the DSL-200. Enter the User name and Password of your PPP connection in the window below, supplied to you by your ISP, and click Dial. Your modem should connect to the network and your connection will be complete.



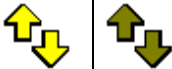




2

Verify the ADSL Connection

Before you continue to the final step, make sure that the ADSL connection has been established. This can be done easily using the Modem's ADSL connection monitoring feature described below.

Desktop Monitoring

A new icon will appear in the System Tray of your desktop. These colored arrows will help you monitor the status of your ADSL connection. The table below summarizes how to interpret the icon indicator.

System Tray Icon		ADSL Status
		Training > Both arrows will alternate yellow and brown in color while during the negotiation of the ADSL connection
		Connection > Established Both arrows appear dark green when the connection has been establish (and no data is being passed in either direction)
		Transmitting Data > The Up arrow appears light green when data is being transmitted
		Receiving Data > The Down arrow appears light green when data is being transmitted
		Error > Two red arrows indicate an error has occurred. The connection may have been lost.

3

LED Indicators

The other way to verify that the ADSL connection has been established is to view the ADSL Link indicator on the Modem. This LED will light up when the ADSL connection has been established. The other LED indicator on the front of the device, the Power LED will light up when the USB cable is inserted.